



Family Health Screening (Urine) Test

Instructions for Use, For Self-Testing Use

INTENDED USE

Family Health Screening Test strips are plastic strips onto which several separate reagent pads are affixed. The strips are intended for testing urine in the home for Nitrite, Protein, Urobilinogen, Blood, Specific Gravity and Bilirubin.

Read instructions completely before using the test.

SUMMARY

Urine testing is a useful procedure as an indicator of health or disease as the composition of urine can change markedly when a wide variety of diseases or infections are present. Because urine testing is simple to carry out, it can be part of routine health screening in the home. The Family Health Screening Test can be used to give general indication of health and helps in the detection of diseases and infections that can affect the kidneys, urinary tract, liver, and heart. This pack contains six strips so that routine testing can be carried out at regular intervals.

General information on urine tests can be obtained from:

www.patient.co.uk/patientplus & www.labtestsonline.org.uk

PRINCIPLE AND EXPECTED VALUES

Nitrite	Nitrite is not detectable in normal urine. Positive nitrite can be indicative of urinary tract infection.
Protein:	Up to 14 mg/dL of protein may be excreted by a normal kidney. Higher than normal levels of protein in urine may indicate a variety of disorders including diseases of the kidney and urinary tract. In older patients, high protein levels may occasionally indicate heart problems.
Urobilinogen:	Urobilinogen is normally present in low concentrations in urine. High levels of urobilinogen can indicate liver disease or conditions associated with increased breakdown of red blood cells.
Blood:	The presence of red blood cells or haemoglobin in urine can indicate diseases or damage to the kidneys or urinary tract.
Specific Gravity:	Urine collected at different times of day may vary in specific gravity from 1.003-1.035. Specific gravity equal or less than 1.010 indicates dilute urine and readings equal or greater than 1.025 indicate concentrated urine. Low readings may simply be due to excessive liquid intake and high readings may be due to insufficient drinking causing dehydration. However, persistent low readings can be due to kidney problems and continuous high readings can be indicative of underlying clinical problems relating to kidney and possibly the heart.
Bilirubin:	Bilirubin is not found in normal urine. The presence of Bilirubin in urine is an early indicator of liver disease such as obstruction of the bile duct or hepatitis.

REAGENTS AND PERFORMANCE CHARACTERISTICS

The table below indicates read times and performance characteristics for each parameter.

Reagent	Read Time	Description
Nitrite (NIT)	60 seconds	Detects sodium nitrite as low as 0.05-0.1 mg/dL in urine with a low specific gravity and less than 30mg/dL ascorbic acid.
Protein (PRO)	60 seconds	Detects albumin as low as 7.5-15 mg/dL (0.075-0.15 g/L)
Urobilinogen (URO)	60 seconds	Detects urobilinogen as low as 0.2-1.0 mg/dL (3.5-17 µmol/L).
Blood (BLO)	60 seconds	Detects free haemoglobin as low as 0.018-0.062 mg/dL or 5-10 erythrocytes/µL in urine specimens with ascorbic acid content of <50 mg/dL.
Specific Gravity (SG)	45 seconds	Determines urine specific gravity between 1.000 and 1.030. Results correlate with values obtained by refractive index method within ±0.005.
Bilirubin (BIL)	30 seconds	Detects bilirubin as low as 0.4-1.0 mg/dL (6.8-17 µmol/L).

The performance characteristics of the Family Health Screening Test have been established by both laboratory and clinical tests. Generally, these tests are specific for the individual parameters being measured. However, the results can be affected

by various substances which interfere with the test reaction. Please refer to the Limitations section in this package insert for further details. Interpretation of visual results is dependent on several factors: the variability of colour perception, the presence of any interfering substances, and the lighting conditions when the strip is read. Each colour block on the chart corresponds to a range of concentrations of the test substance.

PRECAUTIONS

- For *in vitro* diagnostic use only.
- Do not use after the expiry date printed on the pack.
- Not for internal use.
- Keep the strip in the sealed pouch until use.
- Do not touch the reagent pads on the strip.
- Discard any discoloured strips as they may have deteriorated.
- All urine specimens should be handled with care. Wash hands thoroughly after using the test.
- The used strip should be discarded hygienically with normal household waste.

STORAGE AND STABILITY

Store in the sealed pouch either refrigerated or at room temperature (2-30°C). **DO NOT FREEZE.** Keep out of direct sunlight. Do not open the sealed pouch until ready to carry out the test. Do not use the strip after the expiry date printed on the pack.

SPECIMEN COLLECTION AND PREPARATION

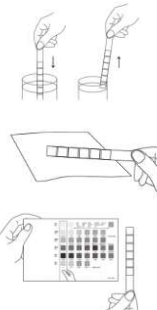
A urine sample must be collected in a clean and dry container and tested as soon as possible. If testing cannot be done within an hour, refrigerate the specimen immediately and let it return to room temperature before testing. Do not store urine at room temperature for longer than one hour as test results may be unreliable. Do not contaminate the urine sample with skin cleansers containing chlorhexidine as this may affect test results.

MATERIALS

Material Provided	Materials Required but Not Provided
<ul style="list-style-type: none"> • 6 Test Strips • Colour Chart • Package Insert 	<ul style="list-style-type: none"> • Timer • Urine Sample Collection Container • Absorbent Sheet

DIRECTIONS FOR USE

1. Remove the strip from the sealed pouch and use it as soon as possible.
2. Hold the end of the strip farthest away from the test pads. Dip the test pads of the strip completely into fresh urine for 1-2 seconds and remove immediately. Run the edge of the strip against the rim of the urine container to remove excess urine.
3. After removing the strip from your urine, immediately bring the edge of the strip into contact with an absorbent material (e.g., paper towel). Lay the strip with the test pad(s) facing upwards and begin timing.
4. **Read results.** After the specified times shown on the colour chart, compare the colour of the test pads with the colour blocks on the colour chart. Hold the strip close to the colour blocks and match carefully. Note: Results may be read up to 2 minutes after the specified times.



INTERPRETATION OF RESULTS

Results are obtained and interpreted by comparing the colour of the test pads on the strip with the colour blocks printed on the colour chart. In the event of unexpected or questionable results, confirm that the strips have been used before the expiry date printed on the pack then repeat the test using a new strip.

If results are outside the normal levels (see below), consult your doctor.

NOTE: DO NOT TAKE ANY MEDICAL DECISION WITHOUT CONSULTING YOUR DOCTOR

Nitrite: Any degree of uniform pink to red colour should be interpreted as a positive result and you should consult your doctor. Viewing the test against a white background may help the detection of low levels of nitrite, which might otherwise be missed. Pink spots or pink edges should not be interpreted as a positive result.

Protein: If your result is 30mg/dL (0.3g/L) or more, consult your doctor.
Urobilinogen: All results lower than 1mg/dL urobilinogen should be interpreted as normal. If your result is 2mg/dL (35µmol/L) or more, consult your doctor.
Blood: A positive (+) result may be seen as either a uniform colour change of the test pad or the appearance of green spots on the test pad (see colour chart). If either type of positive result is obtained, consult your doctor.
Note: Strenuous exercise can cause blood to appear in urine and blood is often found in the urine of menstruating women. A uniform colour change indicates the presence of haemoglobin or broken red blood cells in urine. Green spots on the test pad indicate the presence of intact red blood cells (erythrocytes).
Specific Gravity: A single low reading or a single high reading does not indicate a problem (see Principle and Expected Values). However, persistent low or high readings over a period of time should be checked by your doctor. High protein levels in urine (more than 300mg/dL) can cause high specific gravity results.
Bilirubin: Bilirubin is absent in normal urine, so any positive results should be investigated further by your doctor. If you are taking drugs containing chlorpromazine or rifampin, colour reactions may occur on the test pad that might be mistaken for positive bilirubin.

LIMITATIONS

As with any diagnostic test, results must be considered with all other clinical information available to your doctor. The Family Health Screening Test strips may be affected by substances or drugs that cause abnormal urine colour. The colour development on the test pad may consequently be masked, or a colour reaction may be produced that could be interpreted incorrectly.

Nitrite: Incorrect results may be obtained if you are currently taking antibiotics, or if your urine sample contains Vitamin C or is alkaline. A negative result does not necessarily mean you do not have a urinary tract infection. Negative results may be obtained if your urine has not been in the bladder for at least 4 hours or if the bacteria present are unable to produce nitrite.

Protein: A negative result does not rule out the presence of protein. If your urine has a high specific gravity, a false negative result may be obtained. If your urine sample becomes contaminated with skin cleansers containing chlorhexidine or some types of ammonium compounds, or is alkaline, you may get a false positive result.

Urobilinogen: A negative result does not rule out the presence of urobilinogen. If you are taking drugs containing p-aminosalicylic acid or sulfonamides, you may see a false positive reaction in this test.

Blood: Some urinary tract infections may cause a false positive reaction in this test. False negative results may be obtained if moderate to high concentrations of Vitamin C are present in the urine sample or if the urine is alkaline.

Specific Gravity: Some disorders which cause ketoacidosis (a type of acidic urine) can produce high specific gravity results. Urine components such as glucose do not affect the results of this test.

Bilirubin: If the colour produced on the test pad does not correlate with the colours on the colour chart, your urine sample may contain bile pigments which can mask the bilirubin reaction. High concentrations of Vitamin C in your urine may produce false negative results in this test.

Index of Symbols

	Manufacturer		Tests per kit		Do not reuse
	For <i>in vitro</i> diagnostic use only		Use by		Catalog #
	Store between 2-30°C		Lot Number		Attention, see instructions for use
	Do not use if package is damaged		Consult Instructions For Use		

CIGA Healthcare Ltd
Kilcran House, Kildowney Road,
Ballymena, BT44 9EY,
Northern Ireland

info@suresign.com
www.suresign.com



If you have questions about the instructions or your results, please contact our Helpline 0800 0430318.



REF REF: SFHS101-6
PN: 00231C
REV: 02/23